

Installing SharePoint Foundation 2010 on Windows Home Server 2011

Microsoft's collaboration platform, SharePoint, can be a great addition to your Windows Home Server. In this how-to guide, I show you step-by-step, how to install SharePoint Foundation 2010 on Windows Home Server 2011.

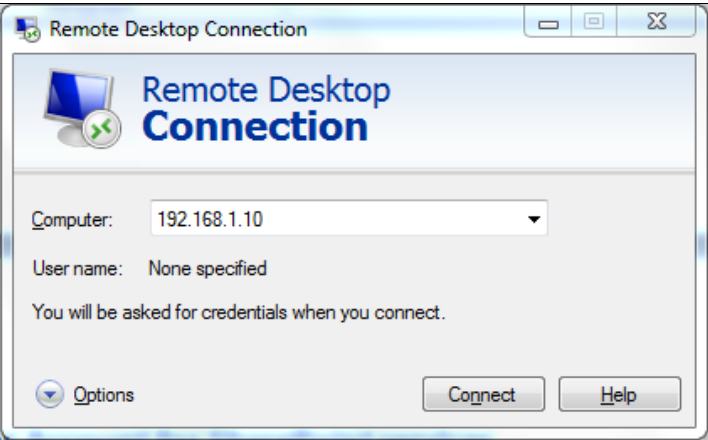
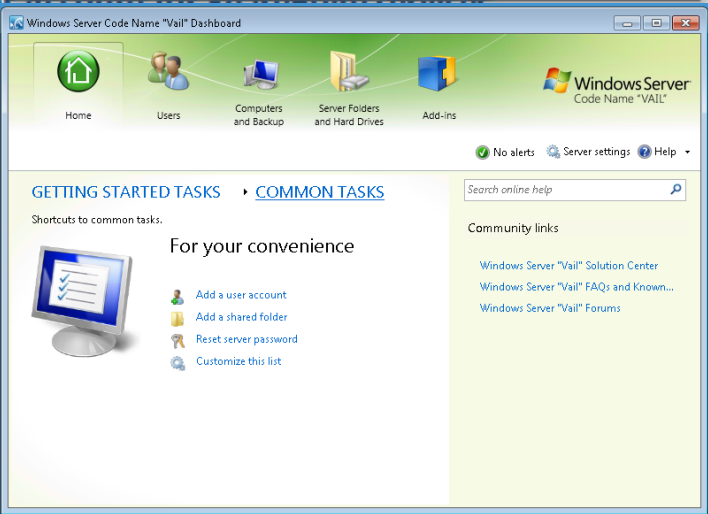
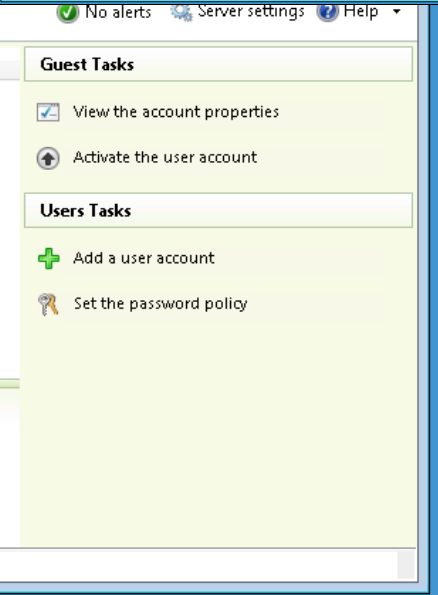
What you'll need:

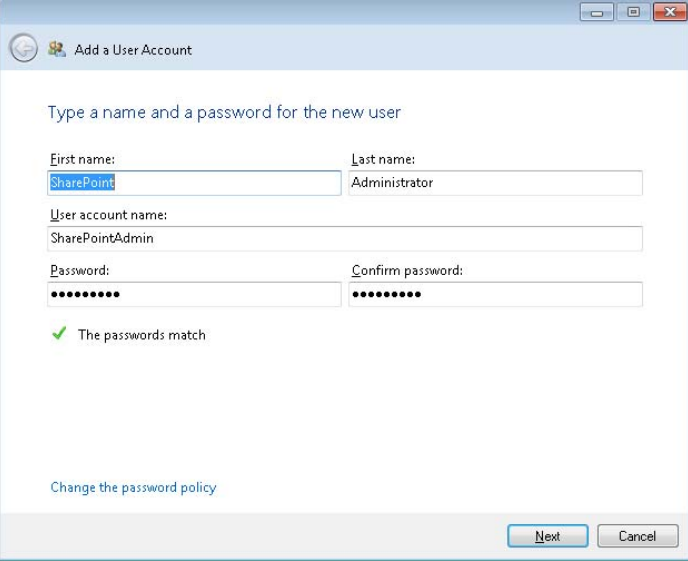
- A server running Windows Home Server 2011 with **at least** 2GB of RAM, 4GB or higher is recommended, and Remote Access must be enabled
- SQL Server 2008 R2 Express – available from <http://go.microsoft.com/?linkid=9729747> (download and copy to a shared folder on the server)
- SharePoint Foundation 2010 – available from <http://bit.ly/spf2010> (download and copy to a shared folder on the server)

Table of Contents:

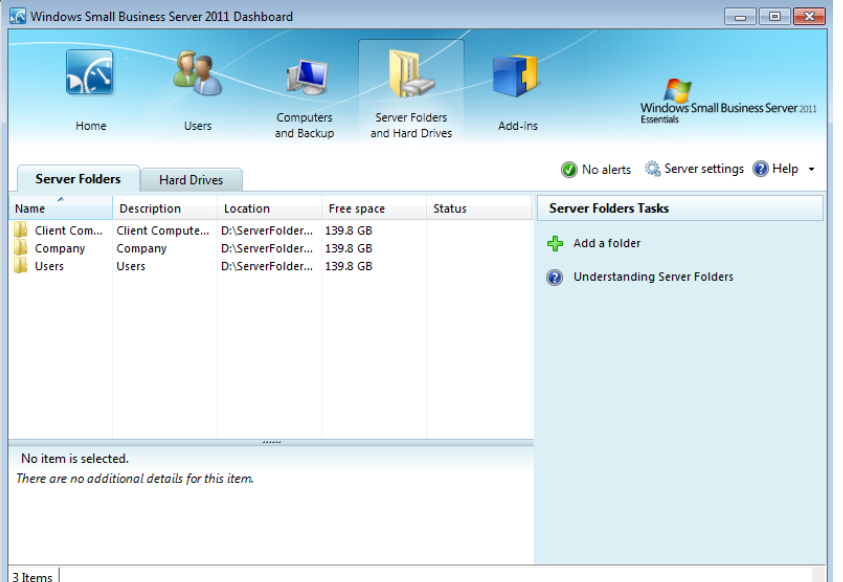
Create a User Account for SharePoint services	2
Create a Server Folder for SharePoint Databases	3
Install SQL Server 2008 R2.....	5
Install SharePoint Foundation 2010	8
Create Configuration Database	12
Run SharePoint Configuration Wizard.....	14
Create a SharePoint Site	17

Create a User Account for SharePoint services

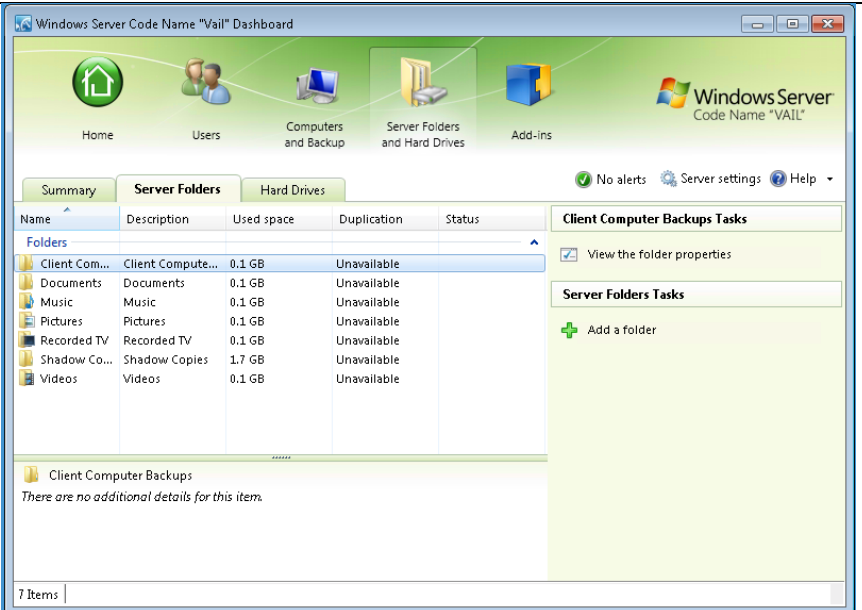
<p>Connect to your server using Remote Desktop Connection.</p> <p>Click Start -> All Programs -> Accessories -> Remote Desktop Connection</p> <p>Logon with the user name Administrator and the password you use to add computers to your server.</p>	
<p>Once connected, open the Dashboard, by clicking the icon on the desktop.</p>	
<p>Click the Users tab, and then click Add a User Account.</p>	

<p>Enter a name for the account. The example at right is SharePoint Administrator.</p> <p>Enter a User Name for the account. The example at right is SharePointAdmin.</p> <p>Choose a password for the Account, then click Next.</p>	
<p>Accept defaults for Shared Folder access, and then click Next.</p>	
<p>Disallow Remote Web Access, and then click Create Account.</p>	
<p>After the account is created, click Close.</p>	

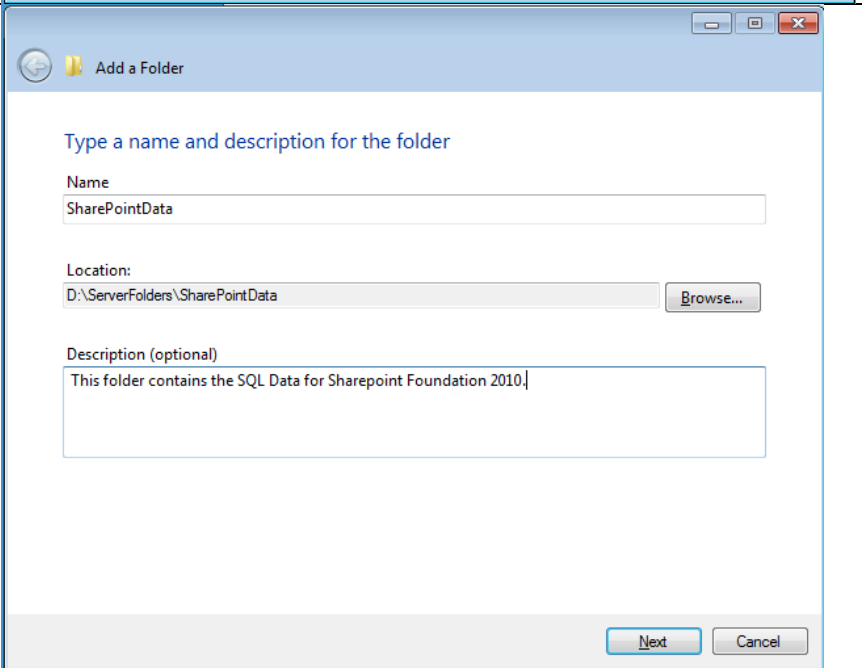
Create a Server Folder for SharePoint Databases

<p>Within the Windows Home Server Dashboard, click the Shared Folders and Hard Drives tab.</p>	
--	--

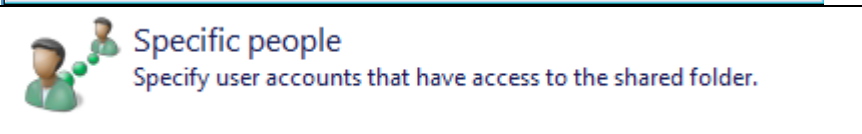
On the **Server Folders** tab click **Add a folder**.



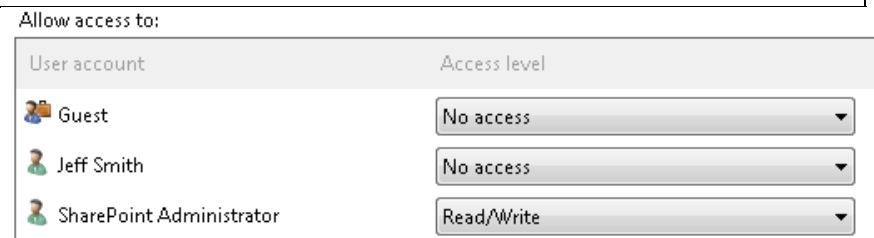
Give the folder a name and give an optional description, then click **Next**.



Click **Specific people**.



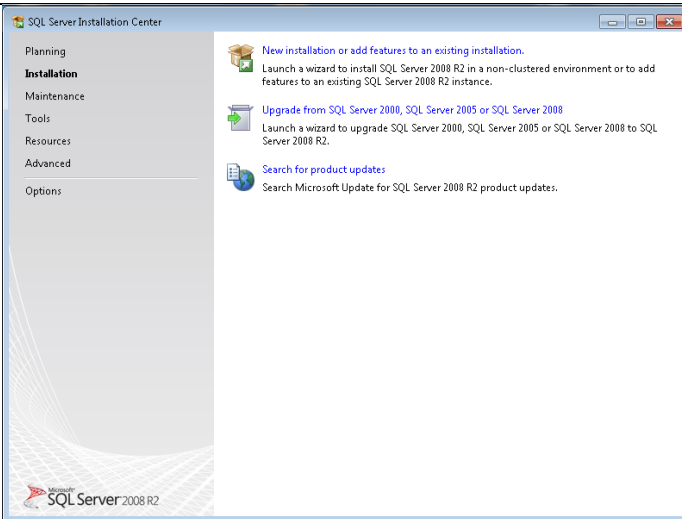
Give the account you made earlier **Read/Write** access to this new folder, then click **Add folder**.



Install SQL Server 2008 R2

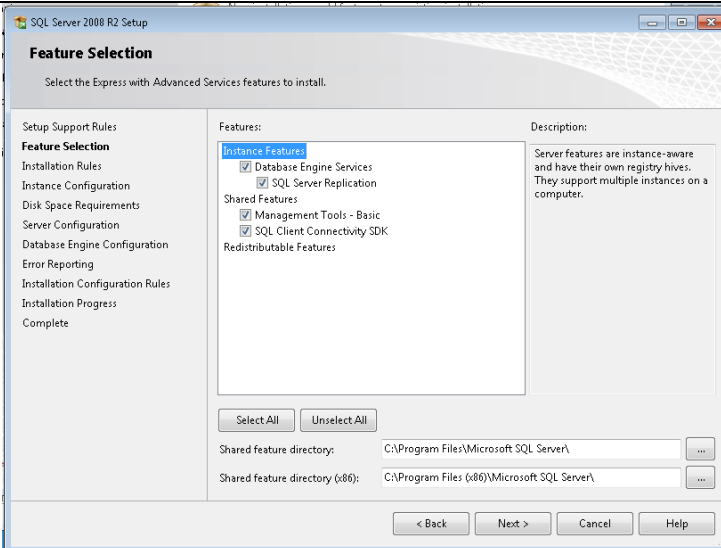
Browse to where you downloaded the SQL Server installer and double-click the file.

When the SQL Server Installation Center loads, click **New installation or add features to an existing installation.**

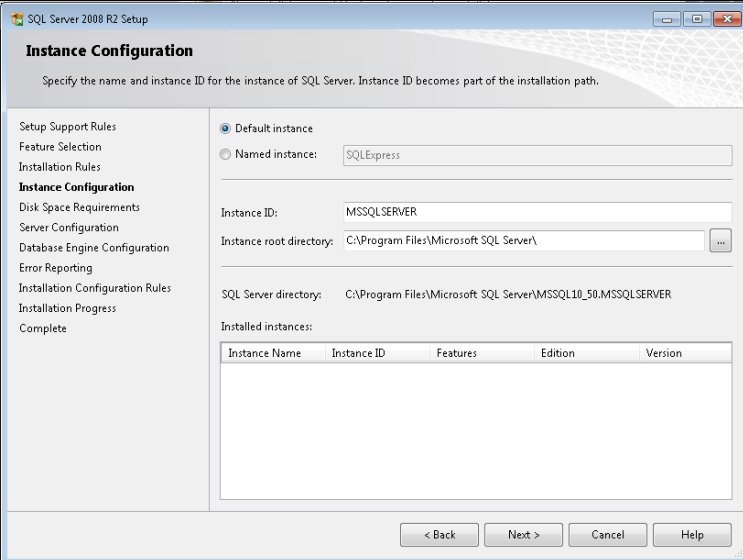


Accept the license terms, and then click **Next.**

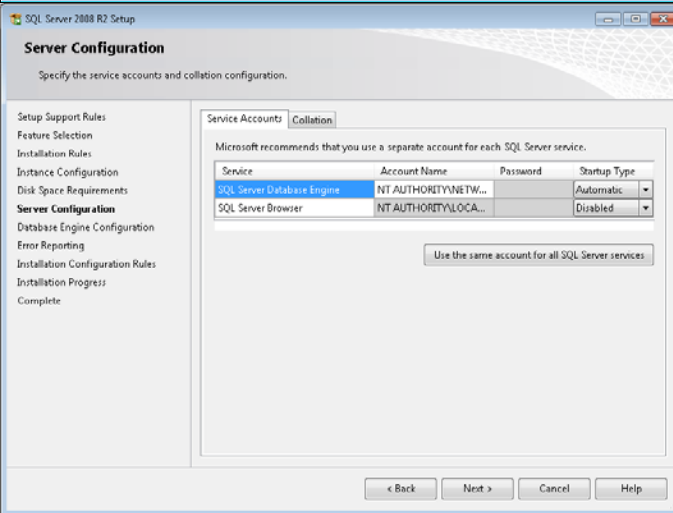
Leave the defaults on the **Feature Selection** page, and then click **Next.**



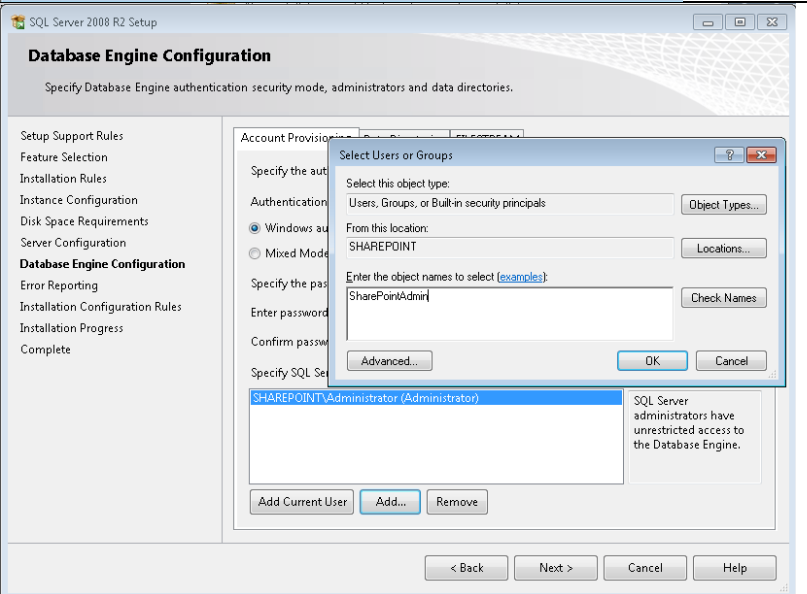
On the **Instance Configuration** screen, choose **Default Instance**, and then click **Next**.



On the **Server Configuration** screen, leave the defaults, and then click **Next**.



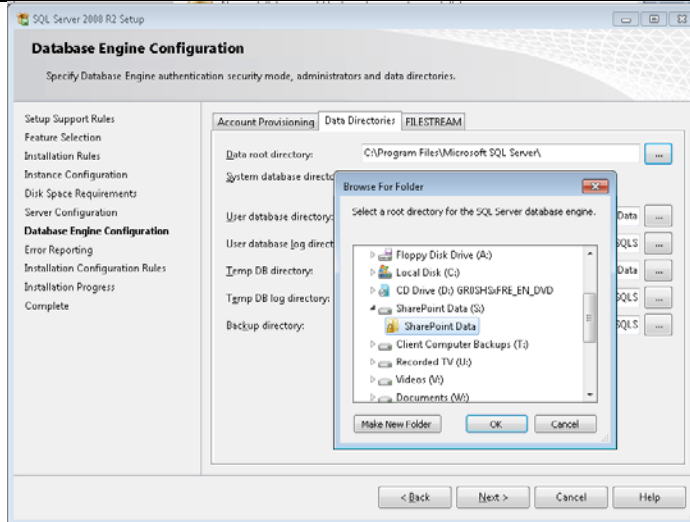
On the **Database Engine Configuration** screen, click the **Add** button, then type the username of the account you created in the first step, then click **OK**.



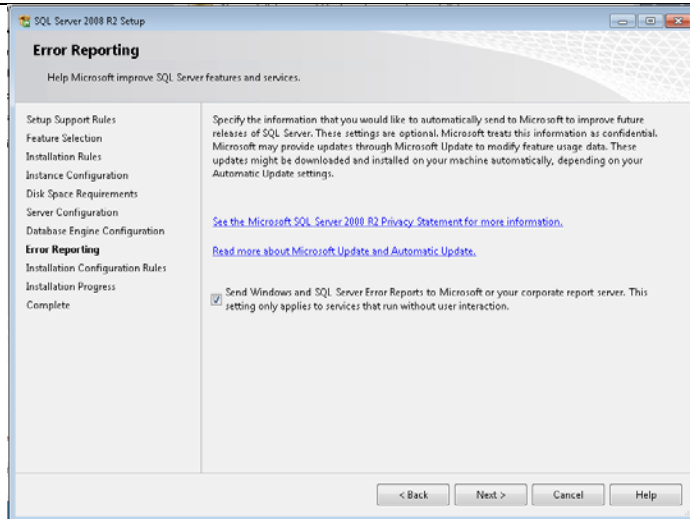
Click the **Data Directories** tab, and then click the ellipsis for the **Data root directory** and change the location to the shared folder created in step two.

For example, if you named the shared folder "SharePoint Data", you'd want to choose "D:\ServerFolders\SharePoint Data"

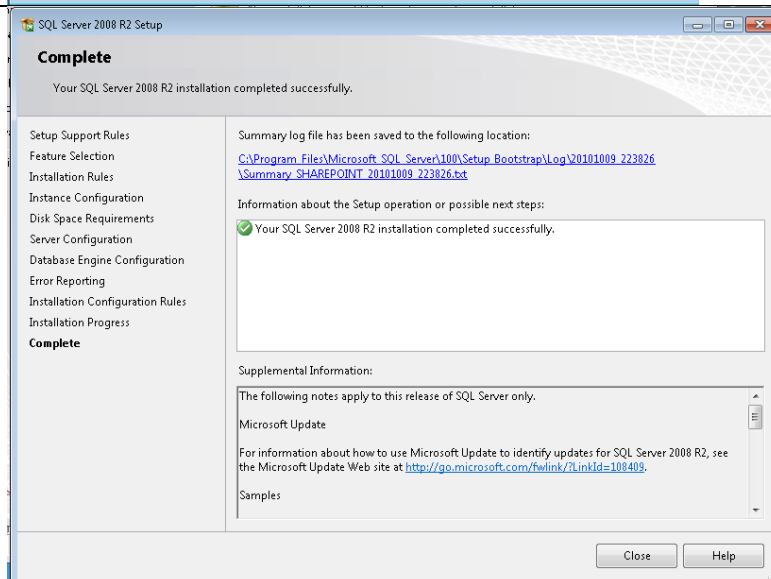
Click **OK**, and then click **Next**.



Choose whether or not to enable **Error Reporting** and then click **Next**.



After installation completes, click **Close**.

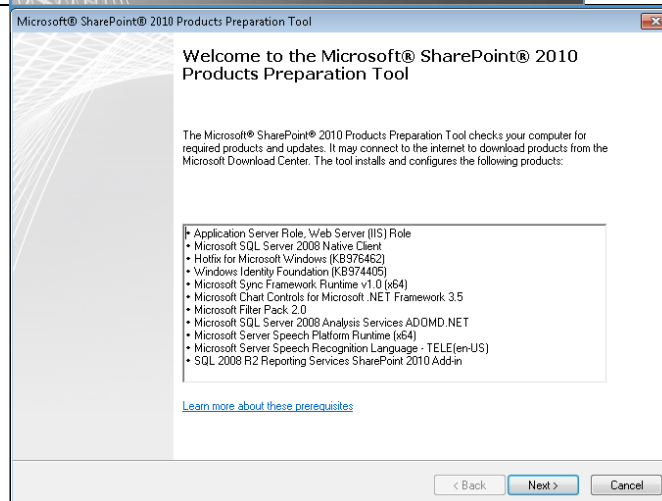


Install SharePoint Foundation 2010

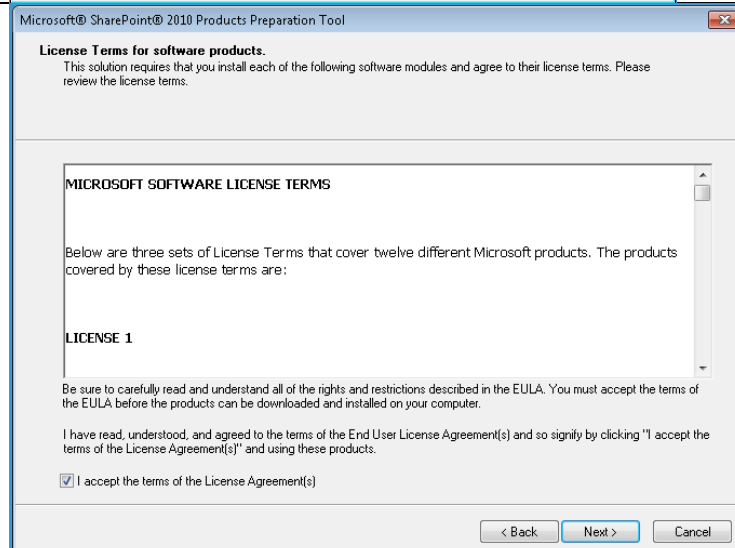
Browse to the location you downloaded SharePoint Foundation 2010 to and double-click the setup file to begin installation.



Under the **Install** header, click **Install software prerequisites**.

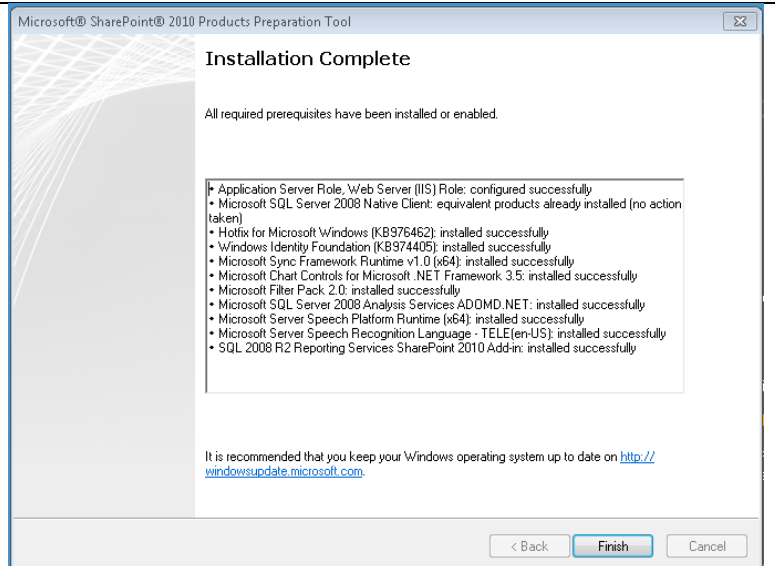


Click **Next**, then agree to the terms of the license, and click **Next** again.



Setup will then install the necessary prerequisites for Sharepoint installation.

After installation is complete, click **Finish**.

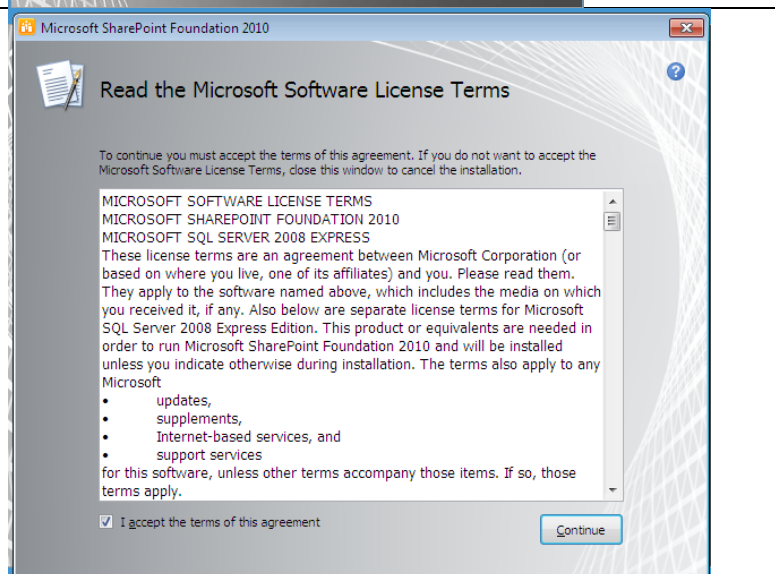


Once back at the Main Menu, choose **Install SharePoint Foundation** under the **Install** header.



The installer will load and then ask you to accept the terms of the license agreement.

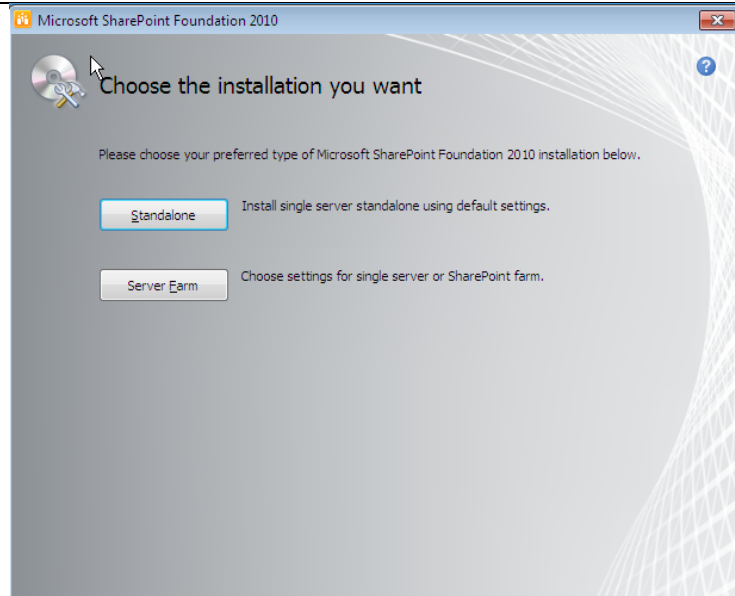
Check the box, and then click **Continue**.



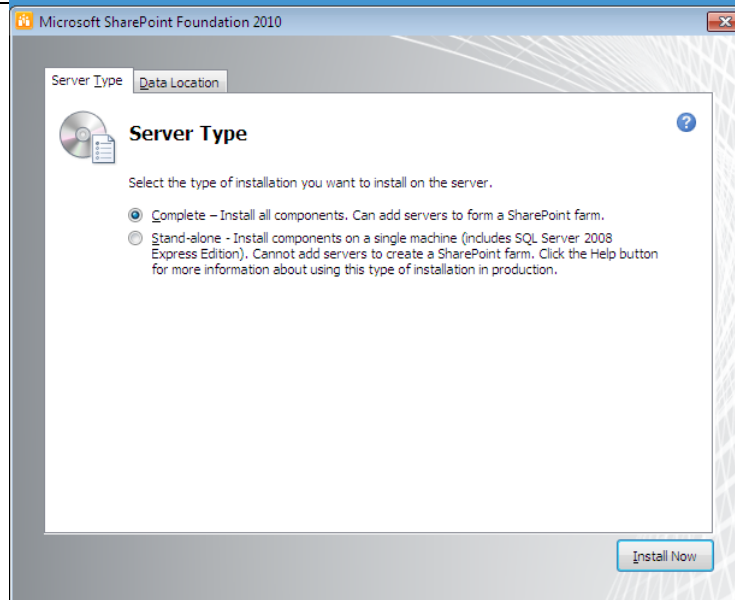
You will then be asked to choose the type of installation.

Choose **Server Farm**.

The reason for this is that the Server Farm option gives us more flexibility in customizing the setup so that we avoid breaking anything Windows Home Server related.

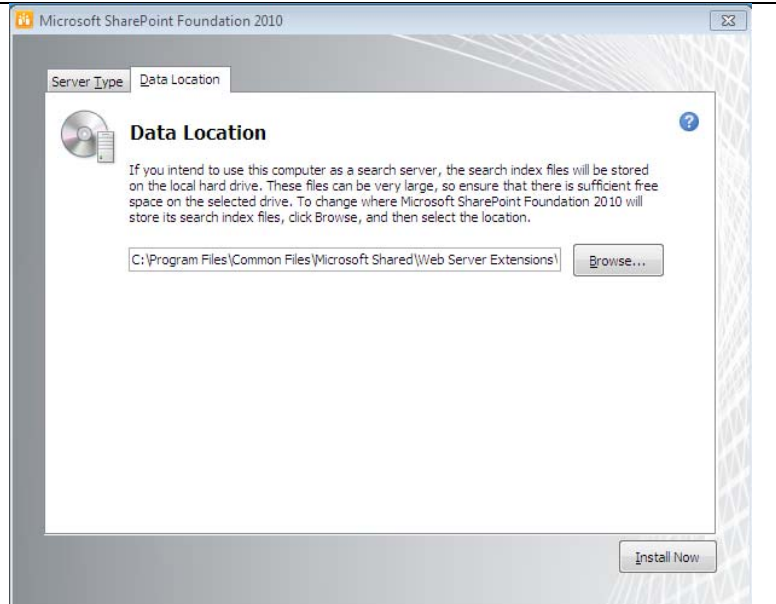


On the **Server Type** tab, select **Complete** for the installation type.



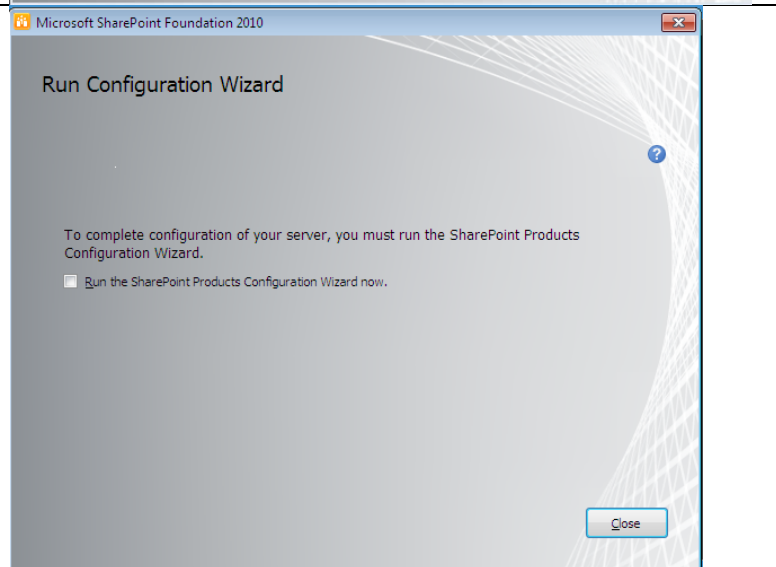
Click the **Data Location** tab, and choose the location of the shared folder you created in step two. This moves the search index off of the system partition and onto the data partition.

Then click **Install Now**.



Uncheck **Run the SharePoint Products Configuration Wizard**, and then click **Close**.

Click **Exit** to exit the SharePoint installer Main Menu.

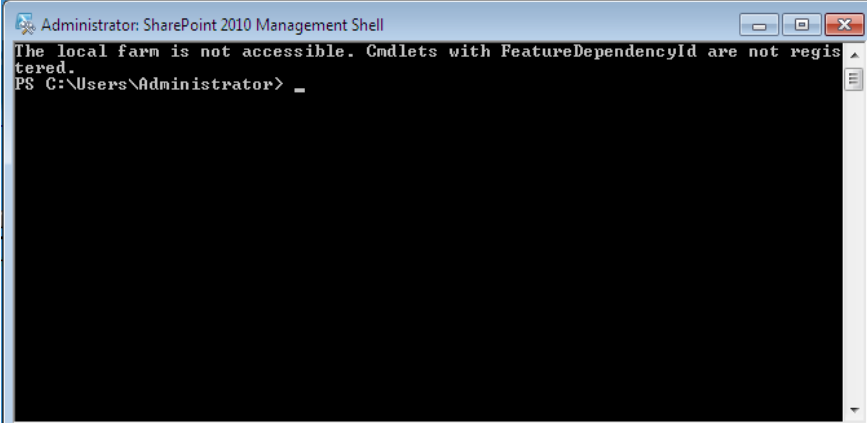


Create Configuration Database

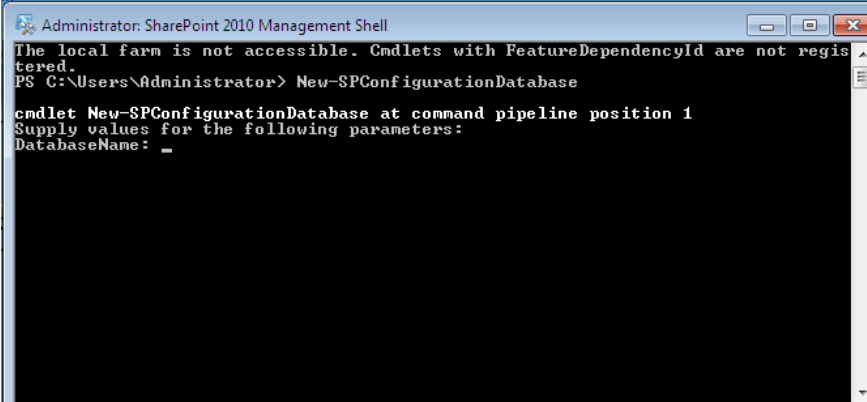
To create the necessary configuration database for SharePoint, we need to use the SharePoint Management Shell.

To launch the shell, click the **Start** button, **All Programs, Microsoft SharePoint 2010 Products**, then click **SharePoint 2010 Management Shell**.

At the prompt, type "New-SPConfigurationDatabase" (minus quotes) and press Enter.



```
Administrator: SharePoint 2010 Management Shell
The local farm is not accessible. Cmdlets with FeatureDependencyId are not registered.
PS G:\Users\Administrator> _
```



```
Administrator: SharePoint 2010 Management Shell
The local farm is not accessible. Cmdlets with FeatureDependencyId are not registered.
PS G:\Users\Administrator> New-SPConfigurationDatabase
cmdlet New-SPConfigurationDatabase at command pipeline position 1
Supply values for the following parameters:
DatabaseName: _
```

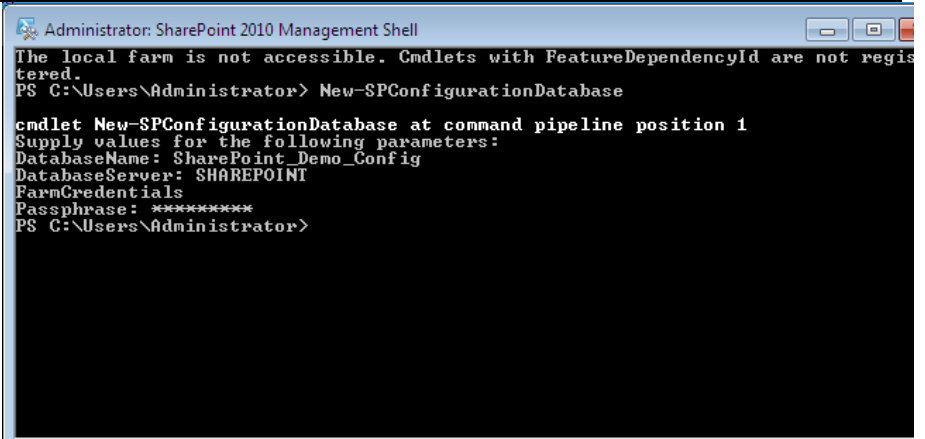
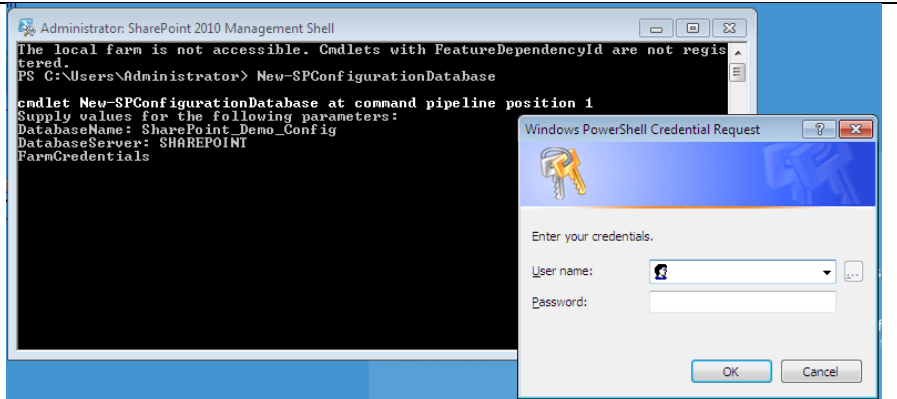
You will be prompted for a database name. You can choose anything for this field as long as it does not include spaces or symbols. Type a database name and press Enter.

Next, you will be prompted for the database server. Type the name of your server and press Enter.

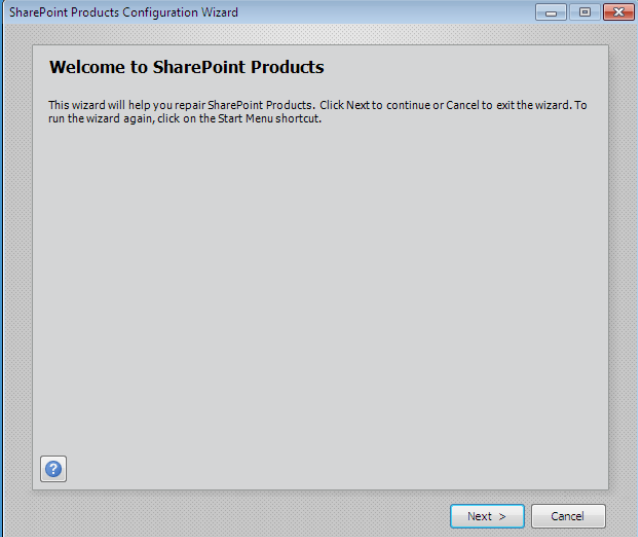
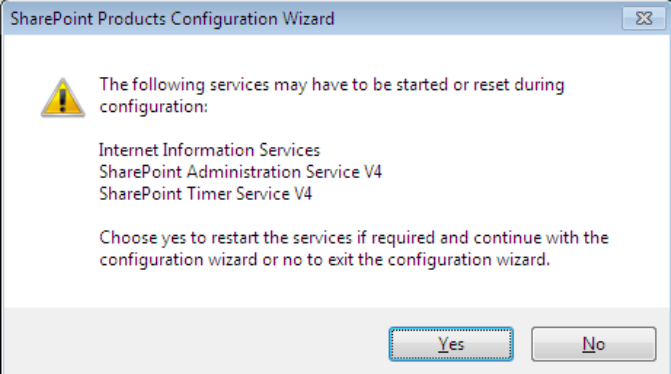
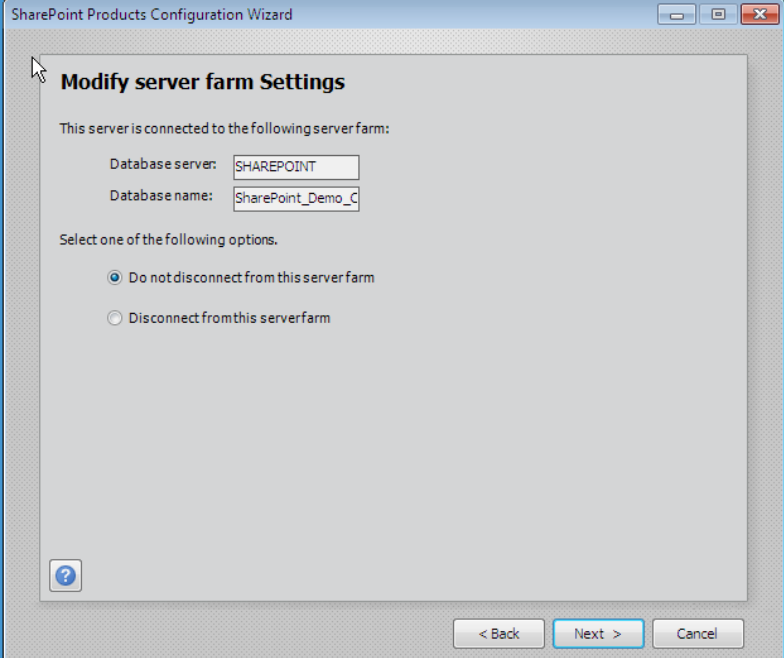
You will then be prompted for a user name and password. This will be the username and password from step one. ***(It must entered in the form of `servername\username`)***

Finally, you'll be asked to enter a passphrase. This can be anything. Enter a passphrase, press Enter, and the configuration database will be created.

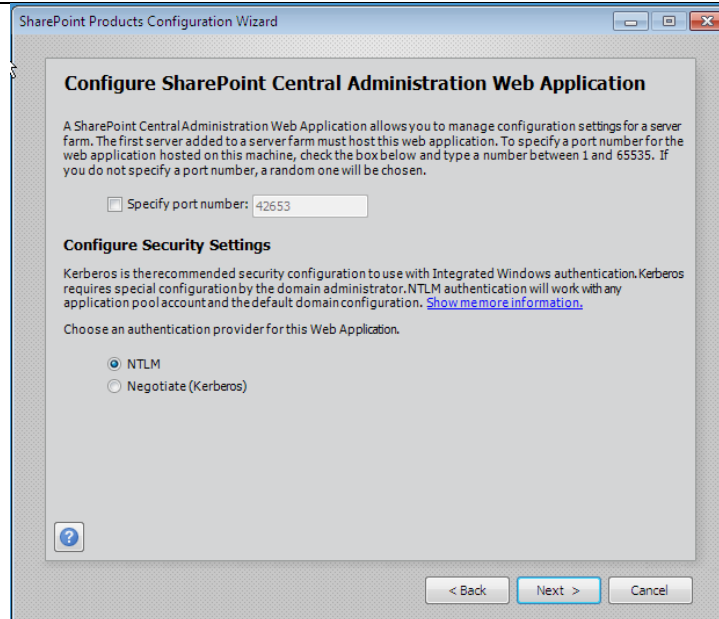
Once the database has been created you will not receive a notification, but will see a similar display as the screen shot at right.



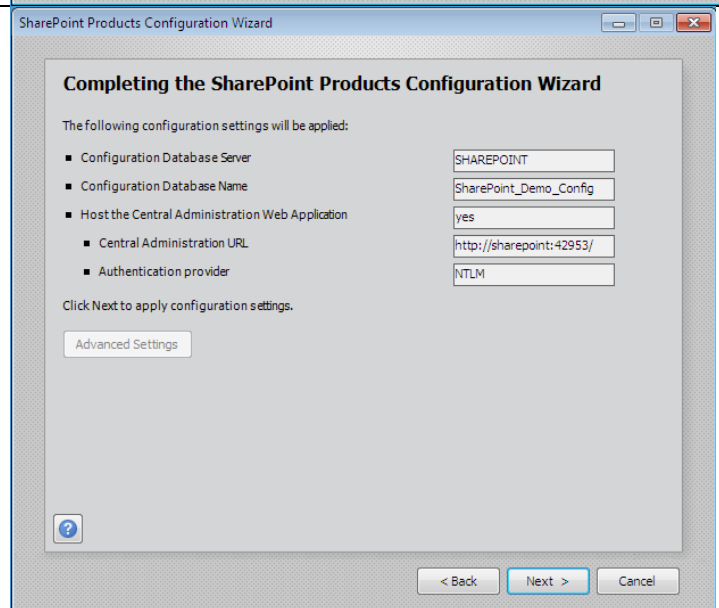
Run SharePoint Configuration Wizard

<p>Go to Start, All Programs, Microsoft SharePoint 2010 Products, SharePoint 2010 Products Configuration Wizard.</p> <p>Click Next to advance to the next page of the wizard.</p>	
<p>You'll receive a message like the one at right. Click Yes to acknowledge that some services may need to be stopped and restarted.</p>	
<p>Ensure that Do not disconnect from server farm is selected and click Next.</p>	

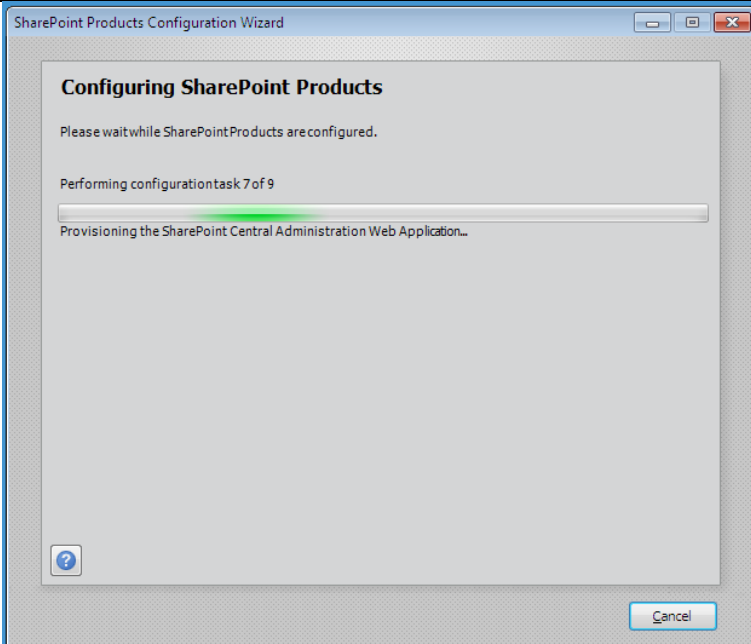
Leave the defaults for the Central Administration port and security type, and then click **Next**.



Confirm that everything looks correct and then click **Next**.



SharePoint will then configure and provision itself.

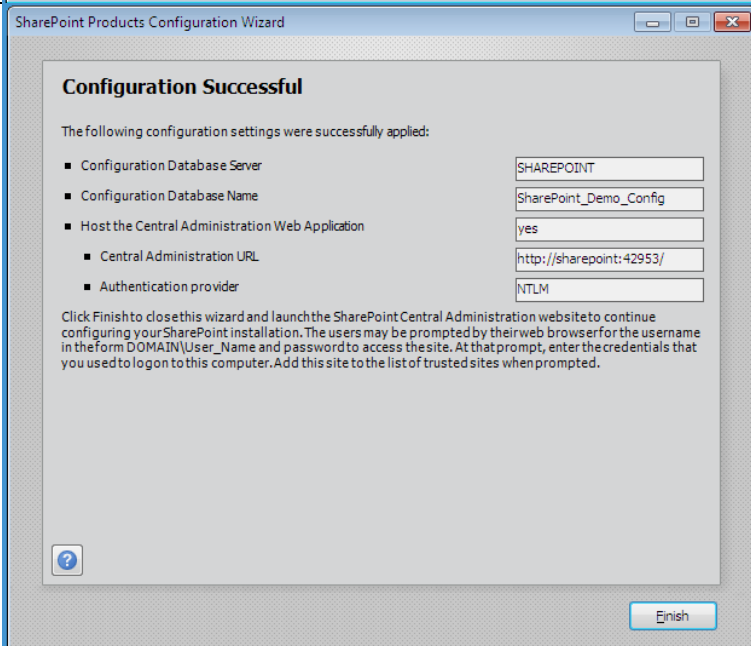


Upon completion, click **Finish** and the SharePoint Central Administration application will launch.

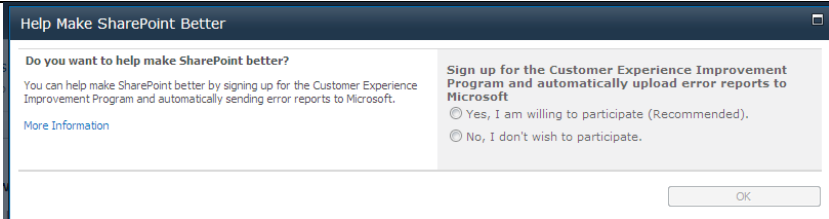

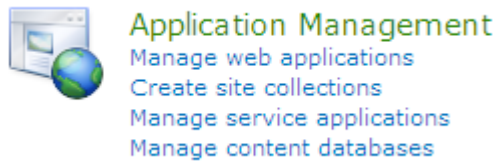
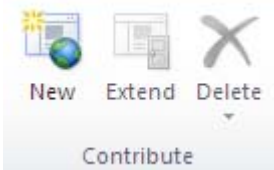
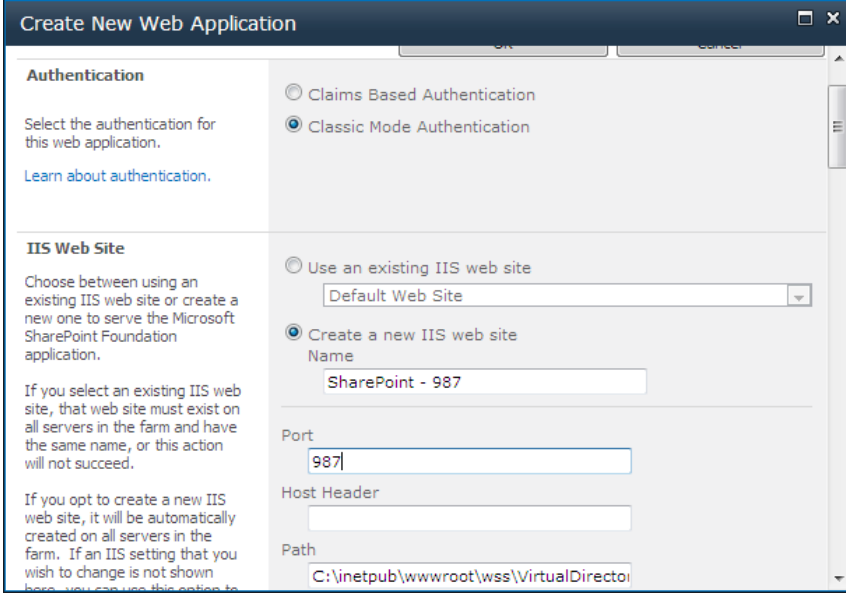
You may be asked for credentials to login.

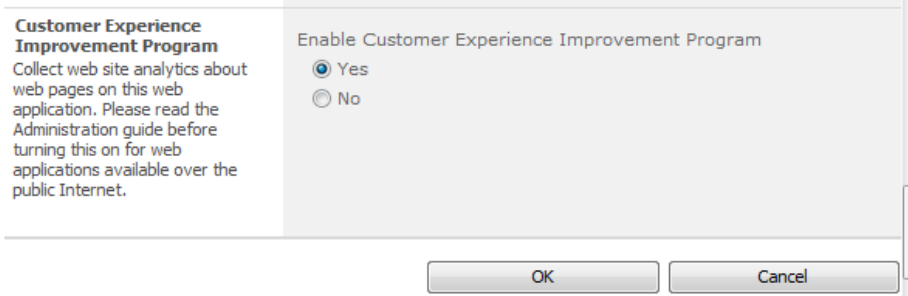
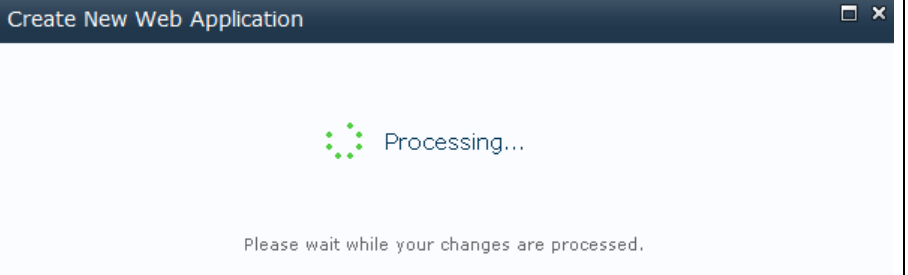
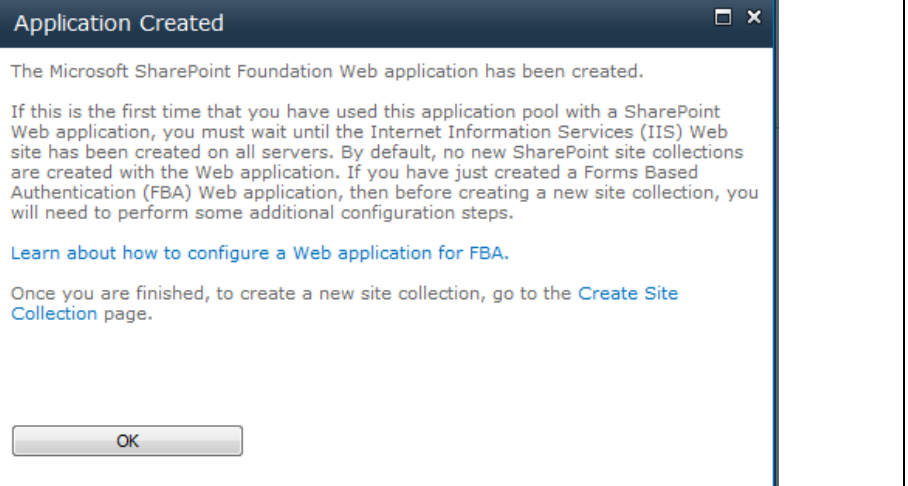
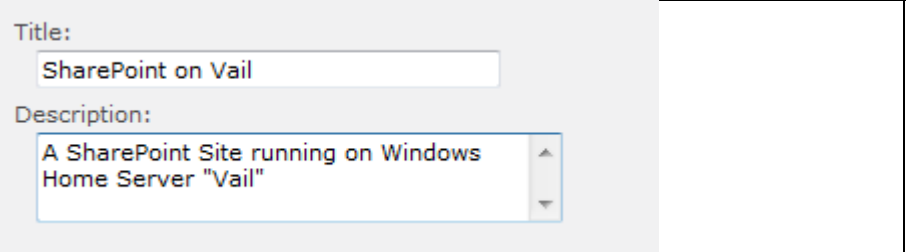
Username: *Administrator*

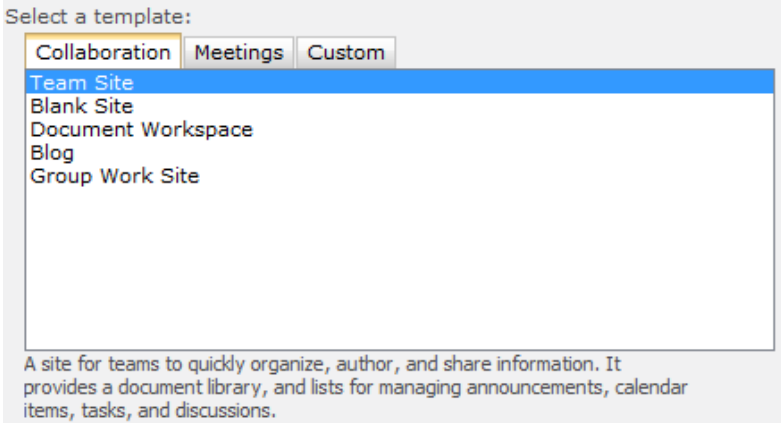
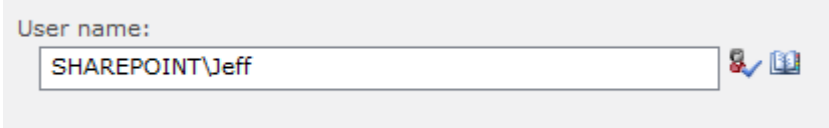
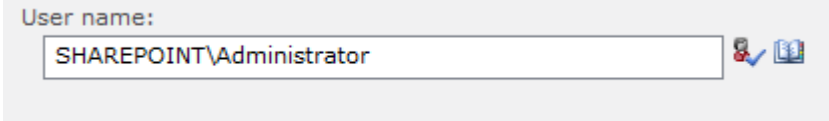
Password: Use the password associated with the account.



Create a SharePoint Site

<p>When the Central Administration site loads, you'll be asked to join the Customer Experience Improvement Program.</p> <p>Choose your willingness, then click OK.</p>	
<p>Click the Cancel button as you'll need to perform some advanced configuration so that SharePoint works alongside Windows Home Server Remote Access.</p>	
<p>Click the Manage Web Applications link under the Application Management heading.</p>	
<p>Click the New button on the Ribbon to create a new web application.</p>	
<p>In the IIS Web Site settings, you'll need to change the port from the default of 80 to something else. In the example I use port 987.</p> <p>Ports you can't use include 80, 443, and 55000.</p>	

<p>Scroll down, leaving all items to as their defaults, then click OK.</p>	
<p>You will see the following window while the website is created. This is normal and you may see this for an extended period of time.</p>	
<p>Once the application has been created, you will see the following message.</p> <p>Near the bottom is a link to create a site collection. Click the link Create Site Collection.</p> <p>Creating the Site Collection will now create the site within the application.</p>	
<p>Choose a name and optional description for your SharePoint site.</p>	

<p>Scroll down and choose a template for your site.</p>	
<p>For the Primary Site Collection Administrator, enter your username.</p>	
<p>For the Secondary Site Collection Administrator, type Administrator.</p> <p>The reason for this, is while optional, adding the Administrator can be beneficial so that in case something ever happens to the primary administrative account, you can login as Administrator and still have access to your SharePoint site.</p> <p>Scroll to the bottom, then click OK.</p>	
<p>Once your site is created, you will receive a notification with a link that you can click to access your newly created site.</p>	<p>The new top-level site was created successfully with the specified URL. If Central Administration, click OK .</p> <p>http://sharepoint:987</p>

Congratulations! You have installed SharePoint Foundation 2010 on Windows Home Server 2011!